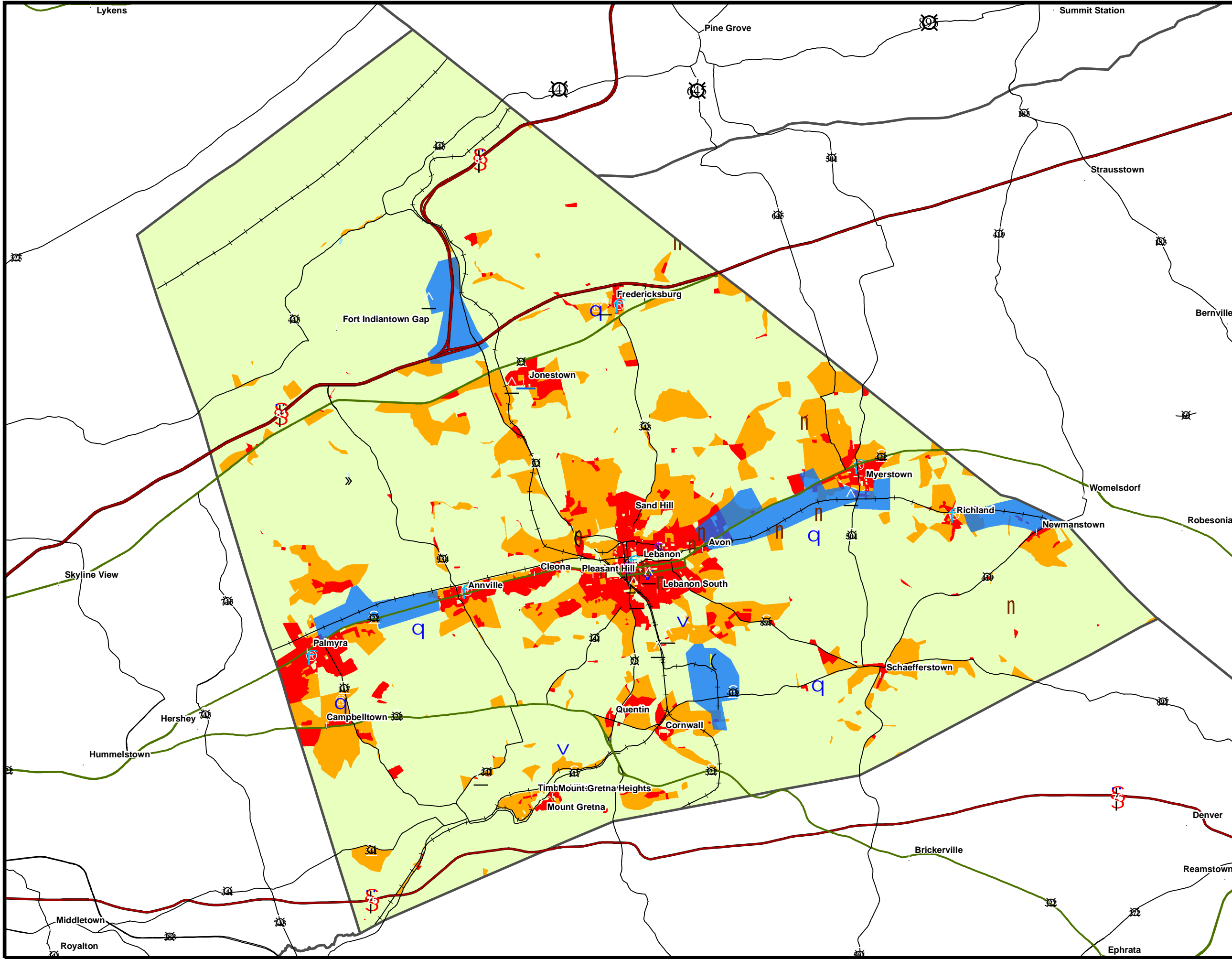


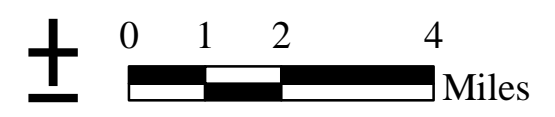
**Figure 4.7-A
Lebanon County, PA
e-REDDI Broadband Initiative
Non-Advanced Service and/or Underserved Areas,
Community Classification, and
Economic Development Features**



- Community
- Major Employers
- Industrial Parks
- KOZ Site
- PA Select Sites
- Airport
- Hospital
- Library
- State Police Station
- Schools and Colleges
- Railroads
- Interstate
- US Highway
- State Route
- Lakes (Regional)
- Non-Advanced Service and/or Underserved

Rural, Suburban and Urban Classifications

- Urbanized (equal or greater than 1000 P/P/SQ mile)
- Suburban (between 274 and 1000 P/P/SQ mile -outside central city)
- Rural (less than 274 P/P/SQ mile)
- Growth Areas
- County Boundary



Data Sources: PA DCED; PA DEPT OF HEALTH;
PA DEPT OF EDUCATION; SSM

Note: For Reference Purposes Only
SSM is not responsible for data accuracy

READING
1047 North Park Road
PO Box 6307
Reading, PA 19610-0307
610.621.2000
F. 610.621.2001

LEHIGH VALLEY
MacArthur Office Plaza, Suite 401
3722 Lehigh Street
Whitehall, PA 18052-3439
610.433.4189
F. 610.433.3499

US VIRGIN ISLANDS
PO Box 8393
St. Thomas, USVI 00801
340.777.7275
F. 340.777.7280

SSM

SPOTTS | STEVENS | McCOY

Engineers and Consultants

ssmgroup.com

11/30/06

g:/projects/w100000/
w109208/w0001/
projects/meetingmaps/
Berks_comp.mxd